

CLASSIFICATION	Quick Start Guide	No. DS-SG-QSG-9320ETU	REV. 0.1
SUBJECT	PAN9320ETU	PAGE	1 of 5
CUSTOMER'S CODE PAN9320ETU	PANASONIC'S CODE PAN9320ETU	DATE	28.04.2015

PAN9320ETU
Quick Start Guide

CLASSIFICATION	Quick Start Guide	No. DS-SG-QSG-9320ETU	REV. 0.1
SUBJECT	PAN9320ETU	PAGE	2 of 5
CUSTOMER'S CODE PAN9320ETU	PANASONIC'S CODE PAN9320ETU	DATE	28.04.2015

Scope of this document

This document gives the customer a very brief description of how to set up the PAN9320ETU and evaluate its functions in six steps with a Microsoft Windows based PC.

Actual Revision HW 2.0

Actual Revision SW 1.0

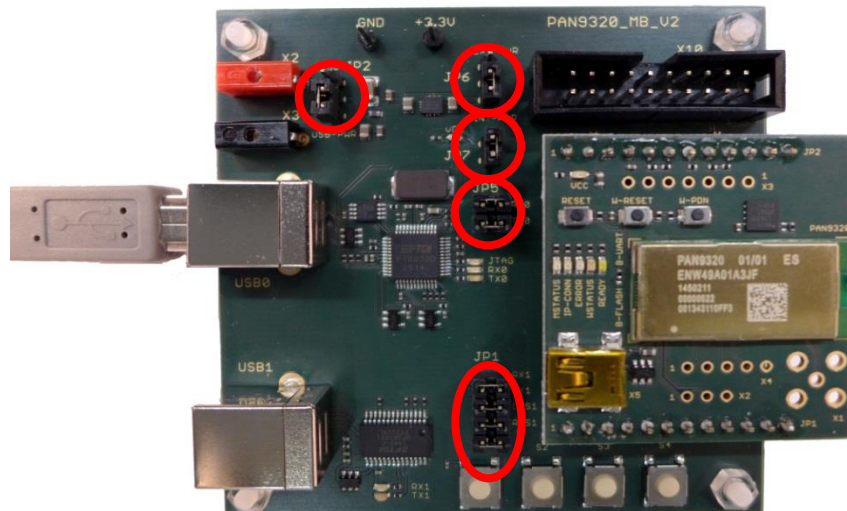
1.

The PAN9320 contains an integrated web-stack that provides a lot of features. For detailed description and how these features can be used, please read the Software Command Specification available at our website: [DS-CS-CommSpec-9320](#)

2.

For powering up the PAN9320ETU, you only have to connect the **USB0** Port to your USB-Port at your development PC. The USB1 is connected to the Uart1 of the module and features its Netcat TCP-Data-Tunnel capability.

Please make sure the jumpers at the Motherboard (MB) are set as shown in the picture below:



The VCC-LED and the Ready-LED on the ETU should be continuously lit on. Further the MSStatus-LED is blinking green. Now the module is ready to work with.

3.

At the first time connecting the PAN9320 to your PC you will be asked to install FTDI drivers. A DualRS232 FTDI chip is used on the board to provide a connection to the PAN9320 UART via virtual USB Com-Port.

The standard driver will create two virtual COM-ports. One is for JTAG-via-USB and the other one is connected to UART0 (Command Interface Uart) on PAN9320. In your

CLASSIFICATION	Quick Start Guide	No. DS-SG-QSG-9320ETU	REV. 0.1
SUBJECT	PAN9320ETU	PAGE	3 of 5
CUSTOMER'S CODE PAN9320ETU	PANASONIC'S CODE PAN9320ETU	DATE	28.04.2015

Windows device manager hardware settings you have to figure out which one is the port for Uart0.

To make it more comfortable you can install the following driver that gathers both FTDI ports to one virtual port.

Download the libusb-win32 v.1.2.6 for free (third-party).

The commands can be send via the Command Interface are described in the DS-CS-CommSpec-9320.

To test the Command Interface via USB0 you could use a terminal program like HTerm.

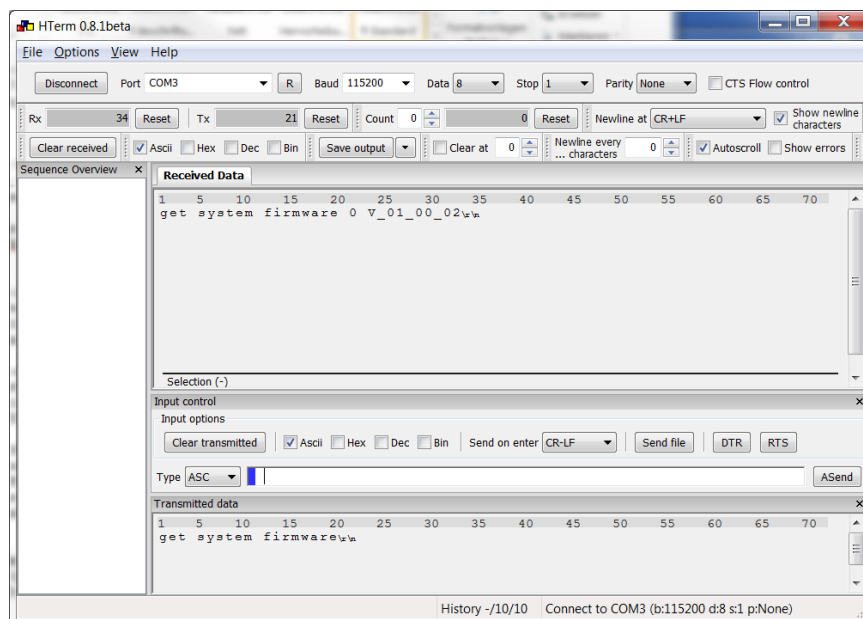
Standard configuration USB0/1:

- **Port:** your virtual ComPort
- **Baudrate:** 115200
- **Databits:** 8
- **Paritybit:** none
- **Stopbits:** 1

If your connected, try to send “get system firmware” to request the firmware version of the module.

Be sure you send the request followed by CR-LF as described in the communication specification.

The answer should be received like in the received window of the HTerm-based example below.



4.

Activate your WLAN-device on your PC. It should start scanning for new wireless devices in your near environment.

You should see the SSID PAN9320_AP in your list as it is broadcasted by PAN9320.

The standard connection is protected by WPA2 key.

CLASSIFICATION	Quick Start Guide	No. DS-SG-QSG-9320ETU	REV. 0.1
SUBJECT	PAN9320ETU	PAGE	4 of 5
CUSTOMER'S CODE PAN9320ETU	PANASONIC'S CODE PAN9320ETU	DATE	28.04.2015

When you are asked to enter a password, please enter the default password:
PAN_9320.

5.

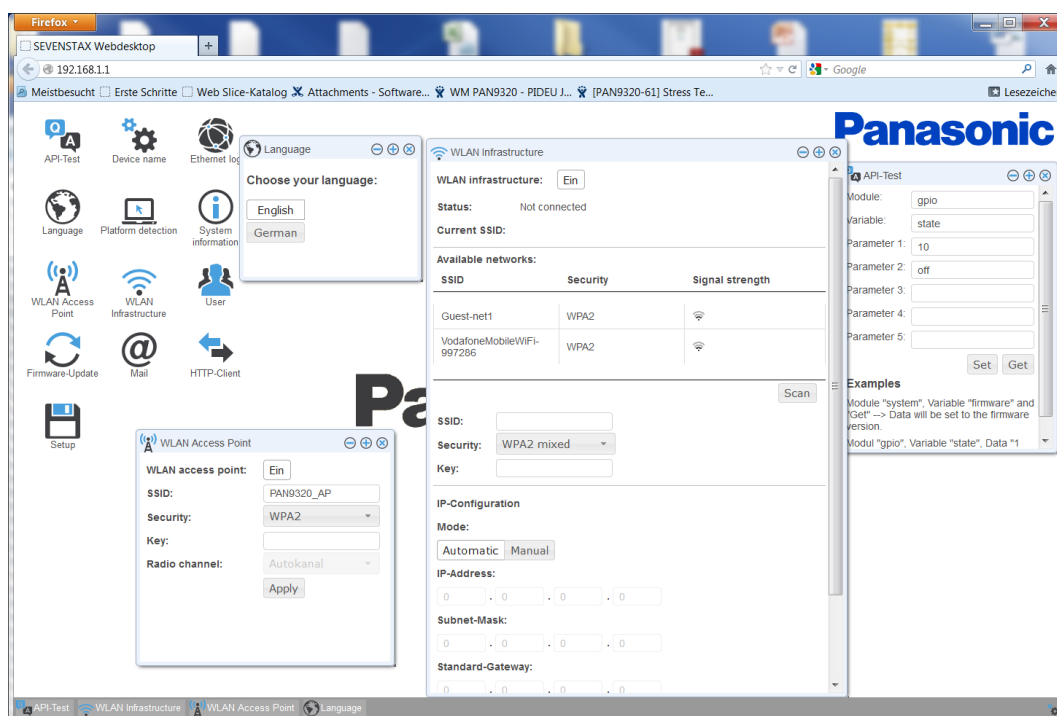
Open your internet browser (i.e. Firefox). Enter the default IP-Address of the PAN9320 in the URL line: 192.168.1.1

As the PAN9320 supports mDNS, you could use pan9320.local or pan9320 in the URL line instead. It depends on the browser you are using

6.

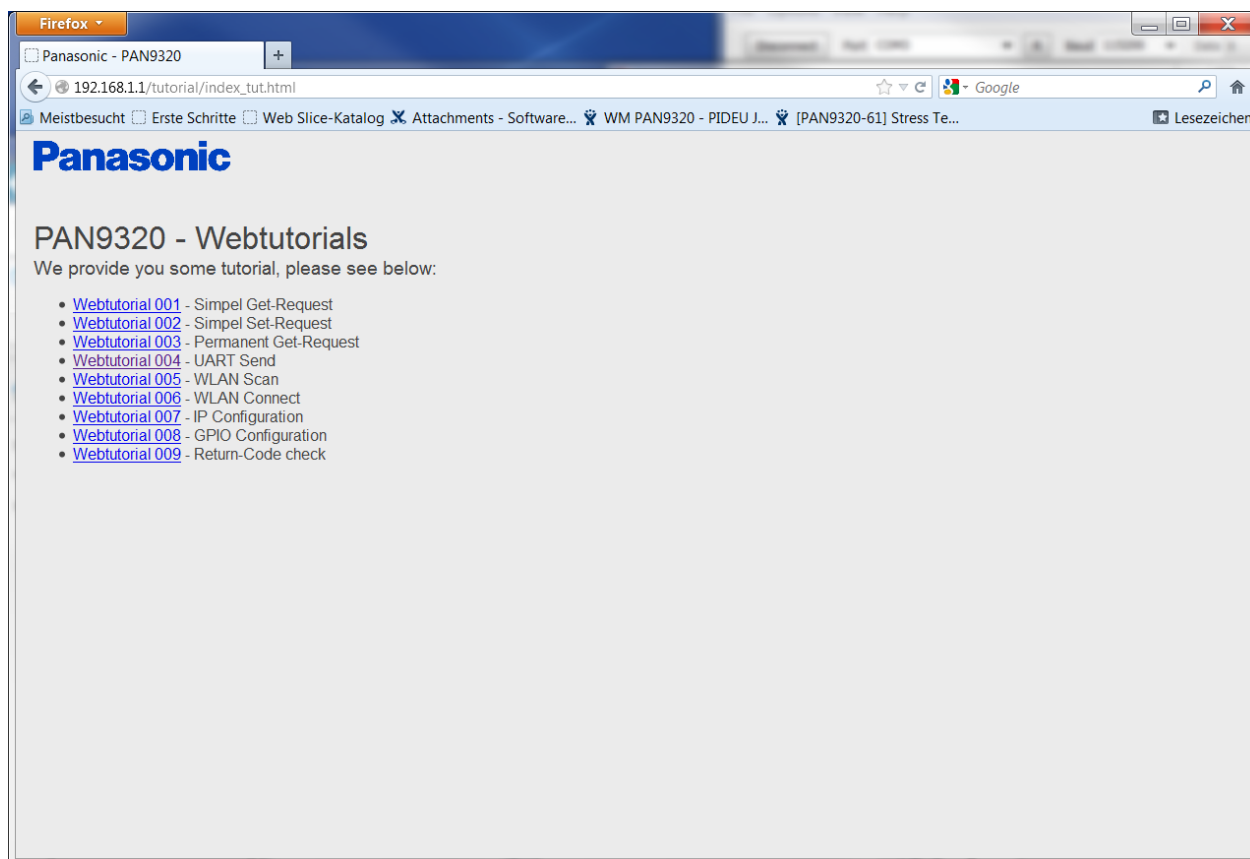
Now, the webserver on the module will provide you a navigation menu to the Webdesktop-Demo application and the tutorials.

Demonstrating its User-Management and Authentication feature, you will be asked for username and password. Enter **admin** as Username and also **admin** as password. Here you can manage and configure all features of the PAN9320 in a very intuitive way.



For a more detailed understanding regarding how to make own webcontent using JSON, you could access the development tutorials also flashed on the module. Therefore navigate through the menu or enter the following address in the URL line: 192.168.1.1\LT2\index.html

CLASSIFICATION	Quick Start Guide	No. DS-SG-QSG-9320ETU	REV. 0.1
SUBJECT	PAN9320ETU	PAGE	5 of 5
CUSTOMER'S CODE PAN9320ETU	PANASONIC'S CODE PAN9320ETU	DATE	28.04.2015



General Information

© Panasonic Electronic Devices Europe GmbH 2010.
All rights reserved.

Panasonic does not warranty and accepts no liability for the information contained herein. The information contained in this document is subject to change without notice. Modules containing "ES" in the series number are Engineering Samples -- i.e. PANxxxxES. This means, the design of this product is not yet concluded. Engineering Samples may be partially or fully functional, and there may be differences to be published Data Sheet. Engineering Samples are not qualified and are not to be used for reliability testing or series production.

Disclaimer:

Customer acknowledges that samples may deviate from the Data Sheet and may bear defects due to their status of development and the lack of qualification mentioned above.

Panasonic rejects any liability or product warranty for Engineering Samples. In particular, Panasonic disclaims liability for damages caused by the use of the Engineering Sample other than for Evaluation Purposes, particularly the installation or integration in another product to be sold by Customer, deviation or lapse in function of Engineering Sample, improper use of Engineering Samples.

Panasonic disclaims any liability for consequential and incidental damages.

In case of any questions, please contact your local sales partner or the related product manager.